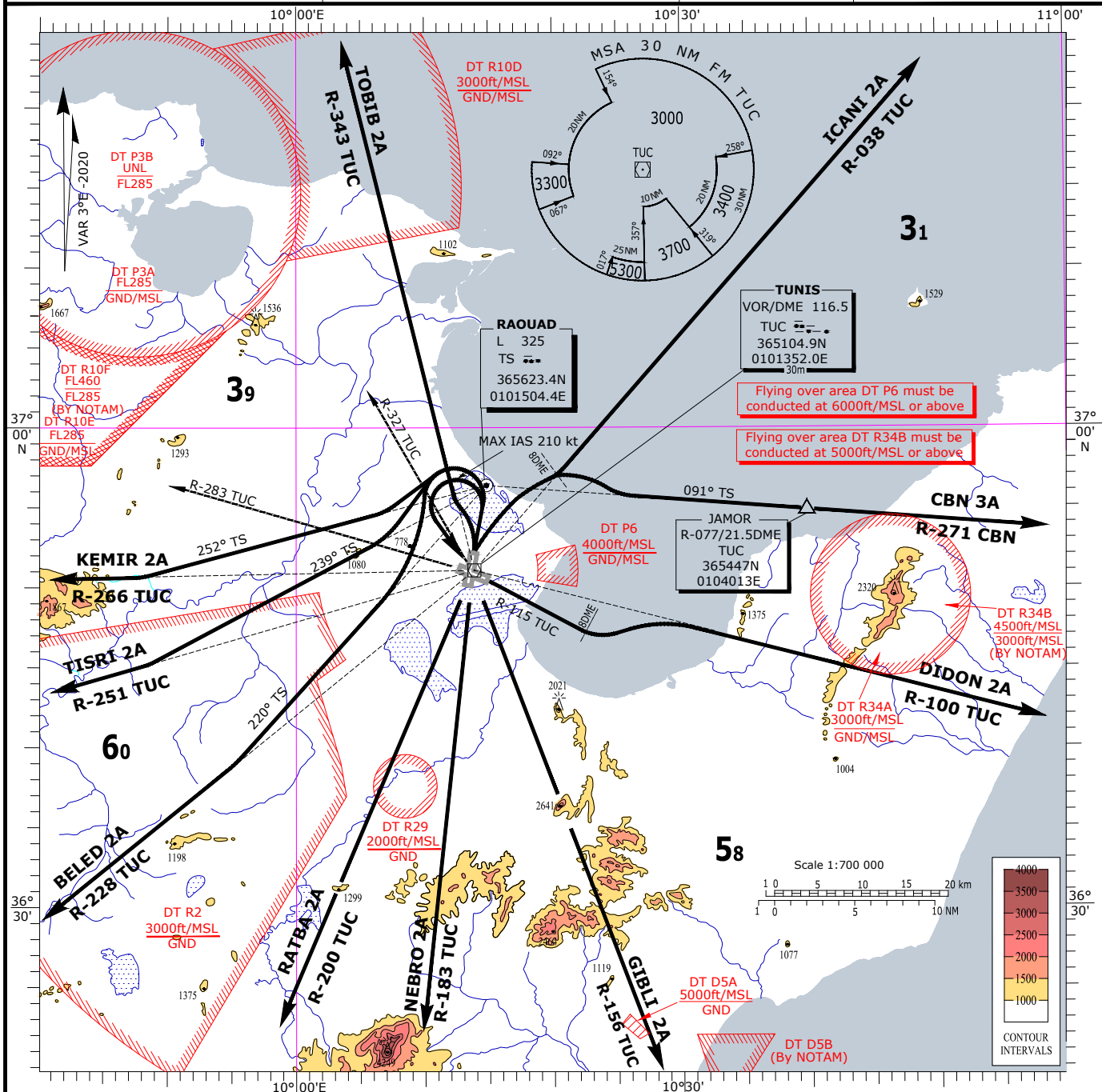


STANDARD DEPARTURE CHART
INSTRUMENT (SID) - ICAOTRANSITION ALTITUDE 6000 ft
BEARINGS AND TRACKS ARE MAGNETIC
ELEVATION AND ALTITUDE IN ftTWR 118.1
APP 121.2TUNIS-Carthage
SID RWY 01

SID RWY 01	ROUTING	REMARKS
TOBIB 2A	After take off, as soon as possible, turn left to intercept and follow R-343 TUC VOR to TOBIB.	
ICANI 2A	After take off, as soon as possible, turn right to intercept and follow R-038 TUC VOR to ICANI.	
CBN 3A	After take off, as soon as possible, turn right to intercept R-038 TUC VOR . At 8 DME TUC turn right to intercept and follow bearing 091° TS Locator (R-271 inbound CBN) to CBN VOR.	-Minimum climb gradient = 365ft/NM (slope 6%) until 3000ft. If unable to comply advise ATC
DIDON 2A	After take off, climb straight ahead. At 2500ft or TS Locator (Whichever is first), turn left to TUC VOR (MAX IAS 210kt, cross R-327 TUC VOR at 3000ft or above, do not overshoot R-283 TUC), follow R-115 TUC. At 8 DME turn left to intercept and follow R-100 TUC VOR to DIDON.	
GIBLI 2A	After take off, climb straight ahead. At 2500ft or TS Locator (Whichever is first), turn left to TUC VOR (MAX IAS 210kt, cross R-327 TUC VOR at 3000ft or above do not overshoot R-283 TUC), follow R-156 TUC VOR to GIBLI.	
NEBRO 2A	After take off, climb straight ahead. At 2500ft or TS Locator (Whichever is first), turn left to TUC VOR (MAX IAS 210kt, cross R-327 TUC VOR at 3000ft or above do not overshoot R-283 TUC), follow R-183 TUC VOR to NEBRO.	-MAX IAS 250kt below FL 100
RATBA 2A	After take off, climb straight ahead. At 2500ft or TS Locator(Whichever is first), turn left to TUC VOR (MAX IAS 210kt,cross R-327 TUC VOR at 3000ft or above do not overshoot R-283 TUC), follow R-200 TUC VOR to RATBA.	-Noise abatement procedures : See subsection DTTA AD 2.21
BELED 2A	After take off, climb straight ahead. At 2500ft or TS Locator (Whichever is first), turn left (Cross R-327 TUC VOR at 3000ft or above) follow bearing 220° TS to intercept and follow R-228 TUC VOR to BELED.	
TISRI 2A	After take off, climb straight ahead. At 2500ft or TS Locator (Whichever is first),turn left (Cross R-327 TUC VOR at 3000ft or above) follow bearing 239° TS to intercept and follow R-251 TUC VOR to TISRI.	-No turn permitted below 500 ft
KEMIR 2A	After take off, climb straight ahead. At 2500ft or TS Locator (Whichever is first),turn left (Cross R-327 TUC VOR at 3000ft or above) follow bearing 252° TS to intercept and follow R-266 TUC VOR to KEMIR.	